



GUILDFORD
BOROUGH

James Whiteman
Managing Director

www.guildford.gov.uk

Dear Councillor

PLANNING COMMITTEE – WEDNESDAY 16TH SEPTEMBER 2020

Please find attached the following:

Presentation (Pages 1 - 12)

Yours sincerely

Sophie Butcher, Democratic Services Officer
01483 444056

Encs

This page is intentionally left blank

20/P/01026

**Guildford Crematorium,
New Pond Road,
Peasmarsh**

[Previous](#)

[Next](#)

[Home](#)



Site location plan

[Previous](#)

[Next](#)

[Home](#)

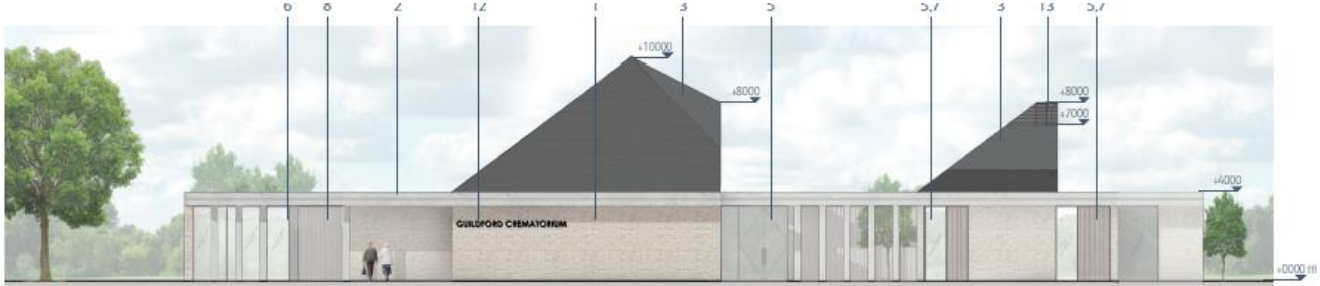


Block plan

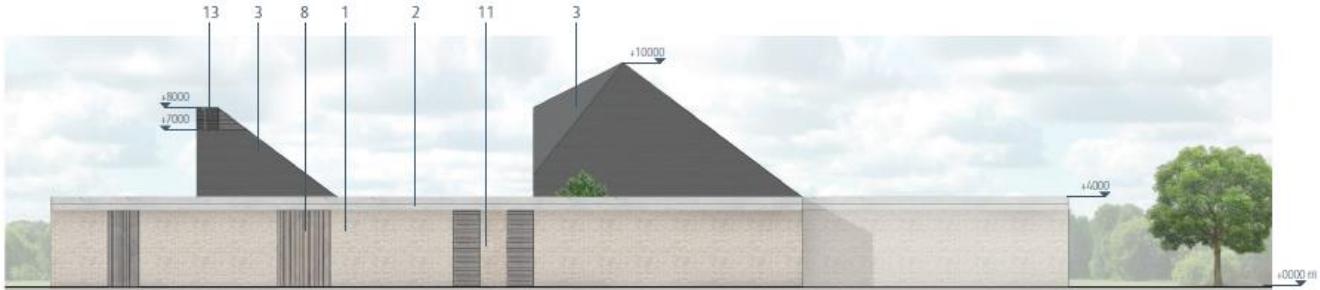
Previous

Next

Home



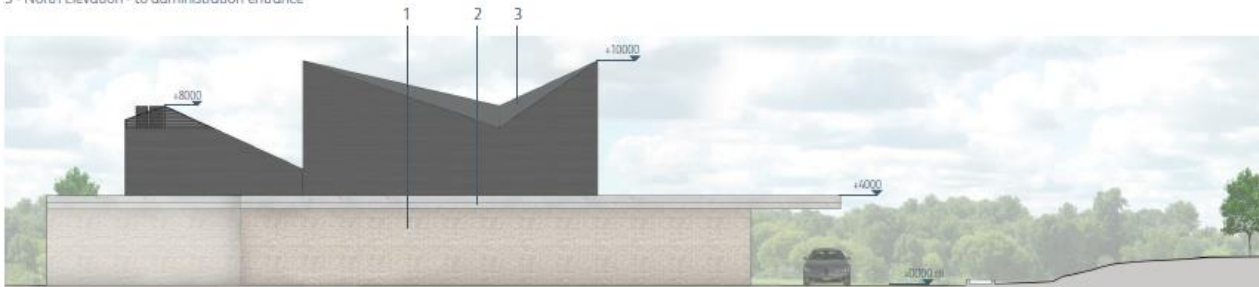
1 - Front Elevation - to chapel entrance



2 - Rear Elevation - to service yard



3 - North Elevation - to administration entrance



4 - South Elevation - from existing memorial gardens



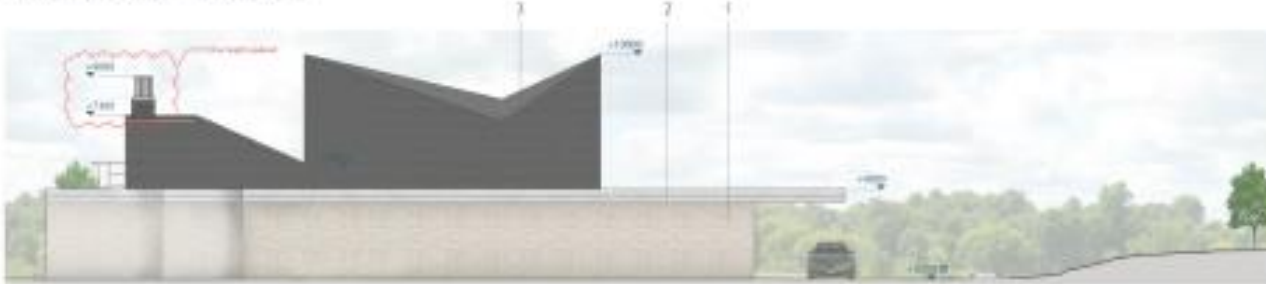
1 - Front Elevation - to chapel entrance



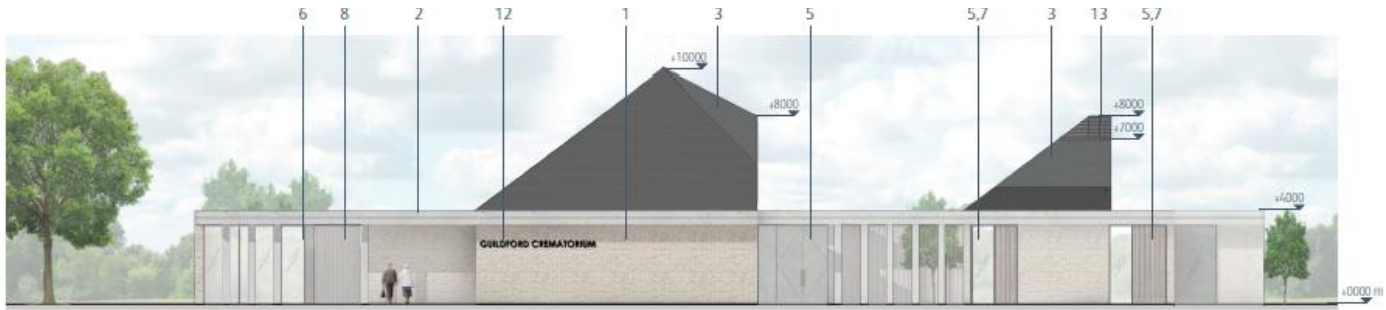
2 - Rear Elevation - to water yard



3 - North Elevation - to administration entrance

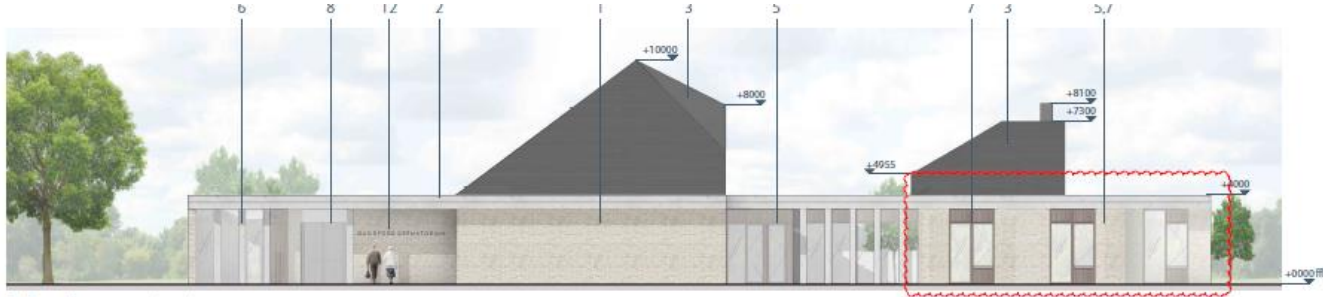


4 - South Elevation - from existing overland parking

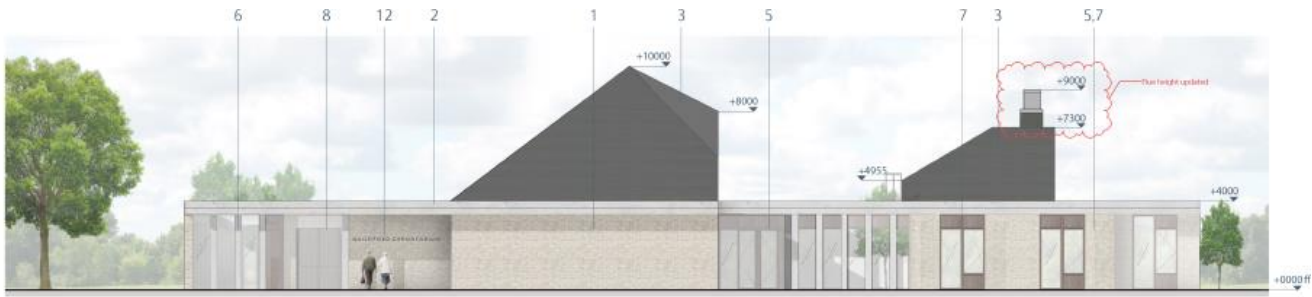


1 - Front Elevation - to chapel entrance

17/P/01389



19/N/00032



1 - Front Elevation - to chapel entrance

20/P/01026

Previous

Next

Home



[Previous](#)

[Next](#)

[Home](#)



[Previous](#)

[Next](#)

[Home](#)



[Previous](#)

[Next](#)

[Home](#)



[Previous](#)

[Next](#)

[Home](#)



Block plan

Previous

Next

Home

This page is intentionally left blank